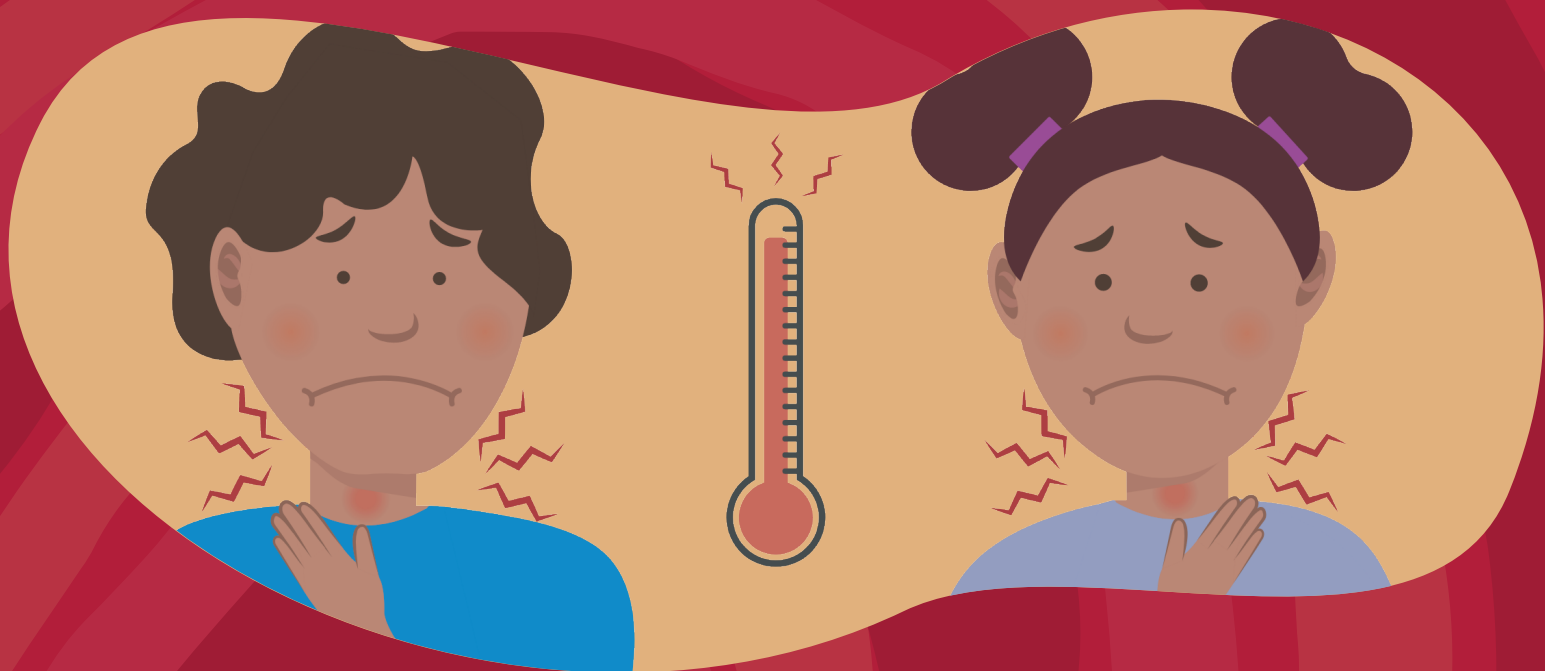


SORE THROAT ?

ARE YOU THINKING IT COULD BE FLU,
COVID-19 OR ANOTHER VIRUS?



**REMEMBER THAT SORE THROATS
CAN BE CAUSED BY STREP A**

**If left untreated, Strep A infections
can lead to ARF and RHD**



If the person is at high risk for acute rheumatic fever, including:

- Aboriginal people living in rural or remote areas, or in large households
- People with a history of ARF or RHD
- People in a family or house where someone has recently had ARF or RHD
- And particularly in people aged under 40 years:

SWAB FOR STREP A AND TREAT WITH ANTIBIOTICS

Refer to the **2025 Australian guideline for the prevention, diagnosis and management of acute rheumatic fever and rheumatic heart disease (Edition 3.3)** and manage patient in line with local guidelines and protocols.



ARF & RHD are notifiable in South Australia

**For more information and for SA Health notifications, contact the
SOUTH AUSTRALIA RHD CONTROL PROGRAM**

www.sahealth.sa.gov.au/rhd
Telephone: (08) 7425 7146
Email: rhd@sa.gov.au



Government
of South Australia

SA Health